

# Dream Report

User Friendly Reporting Software for  
**Continuous** & **Batch** Processes



## Markets

- Automotive
- Building automation
- Chemical industry
- Device management
- Facilities
- Food & beverage
- Manufacturing
- Oil & Gas
- Pharmaceutical
- Power energy
- Water
- Waste water

## References

- Airbus
- Arc Informatique
- Biomérieux
- Citigen
- Cogema
- Cyprus cement
- Emerson
- Eon
- Europhos
- Eurotherm
- De smet
- Gaz de France
- IBM
- Jumo
- Nestlé
- Tridel
- Rhom & hass
- Regin controls
- Ruberoid
- Saint Gobain
- Schneider Electric
- Tridel
- Techno Trade
- Xsys Print

# DREAM REPORT IS BASED ON 5 INTEGRATED FUNCTIONS



## ABOUT DATA COLLECTION

Dream Report integrates a robust communication kernel to collect Data and Alarms from multiple Real Time and Historian Sources.

Dream Report uses **OPC, OLE and ODBC** standards to ensure a common interface between sources from different suppliers.

ODS also develops custom drivers for direct connectivity with other sources and leverage their native history (PLC, RTU, SCADA and more...).

## ABOUT DATA LOGGING

Dream Report integrates a powerful historian to log by groups, data and alarms from:

- Dream Report Analytics defined in reports
- Real Time Data Sources connected

Dream Report enables to define unlimited groups with specific logging conditions for each to get clean and accurate data in the database.

Dream Report log data by default on MSDE from SQL Server, but users can select any other open database such as Oracle, MySQL, Access...

## ABOUT REPORT GENERATION

### AUTOMATIC MODE

Report generation and distribution can be executed on event and on advanced scheduling.

### MANUAL MODE

Dynamic Report Generator (DRG) is an external application that enables to manually change the reports time settings and to generate new report on demand at anytime.

## ABOUT DREAM REPORT OBJECTS

### - TEXT REPRESENTATION

Enables to easily extract and display analysis from historian databases.

#### List of statistics available:

Current value	Integral	Status
Last value	Duration	Alarm Counter
First value	Uptime	Logged Counter
Minimum value	Downtime	Availability
Maximum value	Runtime	Deviation
Average	On Counter	Timestamp
Weighted Average	Off Counter	Free SQL Query
Sum	On/Off Counter	...

### - TABLES

Dream Report offers multiple options to extract Data and Alarms in different tables.

Users can select preformatted tables or create their own with the SQL table.

STEP table enables to extract and display analytics from any step period in few clicks.

### - BARS AND PIES

Dream Report's Bars and Pies allow to display various Statistical values and Alarms in nice views with advanced visualization (% , legend, values...)

### - CHARTS

Users can define time based or XY charts. They can combine charts from different timeframes to visualize and compare results fast (production, processes, ...). Moreover the chart object supports different type of data (value, average value, linear regression). Users can display and adjust automatically or manually multiple scales.



## THE USER INTERFACE

Dream Report is designed to be the simplest and most intuitive solution available in the market, shrinking project development and modification. Its unique user interfaces is made of 4 modules:

- **Dream Report Studio:** to develop and configure projects
- **Dream Report Run Time:** to execute projects
- **Dynamic Report Generator:** to generate new reports on demand
- **Dream Report Web Portal:** to access to any reports from a web browser

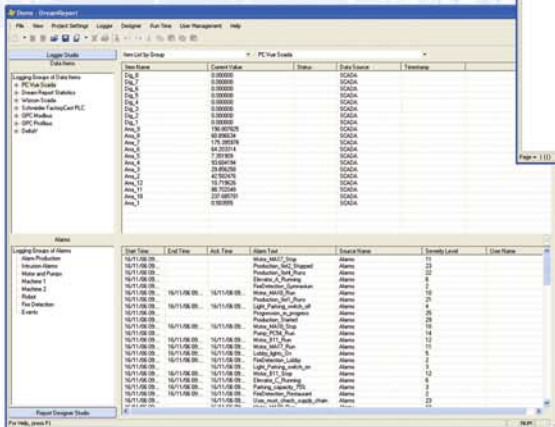
## DREAM REPORT STUDIO

Dream Report Studio is a secured and multilingual software that enables to develop multiple reporting projects. To facilitate project engineering but also to protect critical configuration such as the communication, the studio is divided in 2 sections named the **Logger** and the **Designer**.

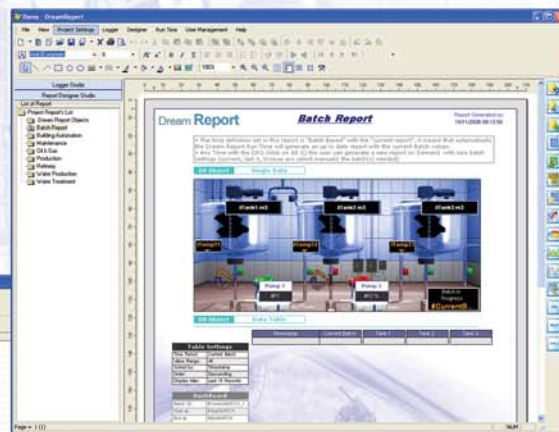
### LOGGER STUDIO

In the logger studio, users define all the connectivity with the data sources and the logging groups of tags and alarms to be archived in Dream Report's history.

The Logger studio also enables to visualize all real time data exchange between Dream Report and the Data sources.



Logger Studio



Designer Studio

### DESIGNER STUDIO

The Designer Studio is based on standard interface and toolbars, with drag and drop data extraction objects making the taking in hand very fast.

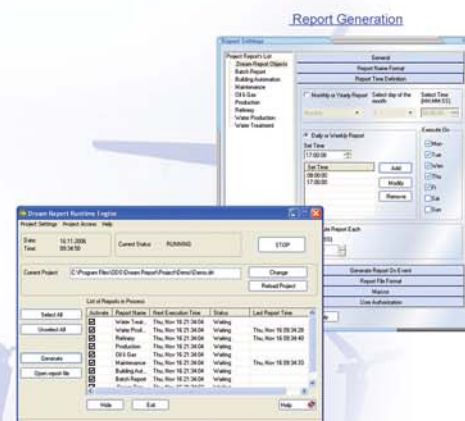
It supports unlimited number of reports, that can be saved as templates for further use.

## DREAM REPORT RUN TIME

Reporting projects are executed by Dream Report Run Time. To generate and distribute reports proactively, the Run Time as to run permanently. The user interface shows the list of reports to be executed and the current status for each one. It also enables to select any report and generate it instantly with the last updated values.

### DREAM REPORT RUN TIME MANAGES:

- The security and all access rights
- Data acquisition to real time sources
- Data logging in any standard databases (by default MSDE)
- Data extraction from Historians or from Dream Report History
- Permanent calculation of all analytics defined in reports
- Proactive report generation
- Automatic report distribution
- Dynamic Report Generator to generate reports on demand
- Dream Report Web Portal to visualize all reports archived and to generate new reports over the Internet/Intranet.

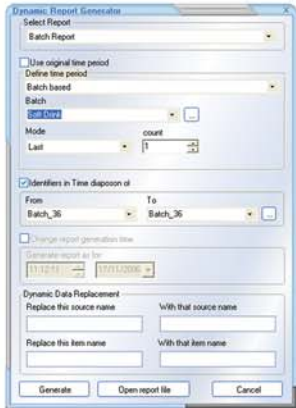


Dream Report Run Time



# DYNAMIC REPORT GENERATOR

With Dynamic Report Generator (DRG), users can select any report template running in the Run Time and generate a new report on demand instantly. This module is available as a standard windows application (generate.exe), a Web application and as an Active X component (AXC\_ODS\_Generate) to be integrated on scada application for example.



Dynamic Report Generator

DRG offers multiple options to generate reports "On Demand":

- It can generate reports with their original settings to get up-to-date values
- Or modify the following settings options before execution.

### CHANGE CPU CLOCK

To replay previous reports, without changing any object configuration

### CHANGE TIME PERIOD

Means forcing each object defined with new time period settings.

**ABSOLUTE/RELATIVE TIME** (EX: FROM JAN 1, AT TODAY)

**FIXE PERIOD** (EX: LAST MONTH)

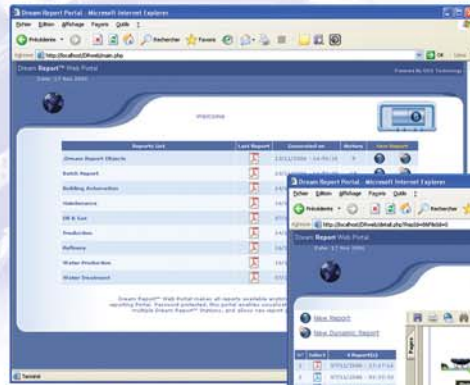
**BATCH NAME** (SELECT DIRECTLY THE BATCH ID)

# DREAM REPORT WEB PORTAL

Dream Report Web Portal is ideal for distributing and sharing reports over the Internet/Intranet. Users can easily browse and display PDF reports from the current project running or generate new reports on Demand using Web DRG. It can be customized and integrated in other web portals.

### DREAM REPORT WEB PORTAL BASE FUNCTIONNALITIES

- Password protected
- Multiple concurrent users
- Multiple Dream Report Stations accessibility
- Manages access rights and display only authorized reports
- Enables to access and visualize any report archived
- Enables to generate new reports
- Multilingual



Dream Report Web Portal



### DREAM REPORT WEB PORTAL KEY BENEFITS

Dream Report Web Portal is ideal for improving global asset management and facilitate business decision by providing proactively up-to-date reports.

It can be used by any operators, managers, executives but also by customers, organizations and suppliers that wants to be permanently connected and interact with the field.

Dream Report turns data into valuable information, DR Web provide it to you anywhere.

Reports everywhere

- Airports Installations
- Assembly Lines
- ATM Machines
- Batch Production
- Building Management
- Chemical Plants
- Cogenerators
- Cold Stores
- Cooling Systems
- Device Management
- Extrusion Lines
- Heating Networks
- Incinerators
- Irrigation Systems
- Machine Tools
- Medical Devices
- Parkings
- Pipelines Networks
- Power Plants
- Power Supply Networks
- Production Lines
- Pumping Stations
- Railways Control
- Refineries
- Reservoirs
- Silo Control
- Storage Containers
- Traffic Control
- Traffic Light
- Transportation
- Tunnel Control
- Vending Machines
- Water Supply Systems
- Water Towers
- Waste Water Systems





**DREAM REPORT™** FROM OCEAN DATA SYSTEMS (ODS) IS THE FIRST INTEGRATED REPORTING SOFTWARE SOLUTION FOR INDUSTRIAL AUTOMATION. IT WAS DESIGNED TO BE THE SIMPLEST SOLUTION TO EXTRACT DATA FROM ALMOST ANY DATA SOURCES AND PROVIDE AUTOMATICALLY REPORTS TO ANYBODY, ANYWHERE. BUILT ON MODERN TECHNOLOGIES, DREAM REPORT™ FITS PERFECTLY FOR BOTH **CONTINUOUS** AND **BATCH** PROCESS APPLICATIONS.

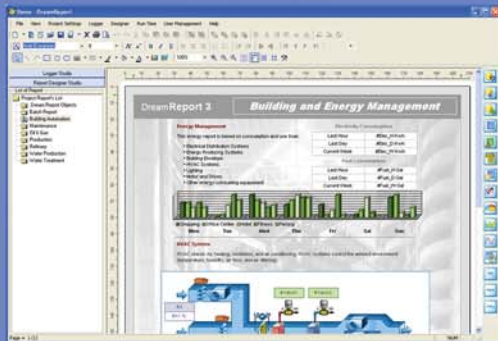
## MAJOR DREAM REPORT'S KEY DIFFERENCES AND BENEFITS:

### THE SIMPLEST SOLUTION

Dream Report Studio position Dream Report as the most intuitive and easy to use reporting solution available in the market. Specialty designed for industrial automation, a one day training is sufficient to generate advanced reports.

Dream Report doesn't require any IT or programming skills. Configuration is done through simples interfaces, menus and friendly dialog boxes.

Moreover it reduces significantly project development time and simplifies project modification.



### DREAM REPORT PUTS IT ALL TOGETHER

No more integration between programs will be required to collect, extract and publish data from data sources.

Dream Report integrates all functions in one single and user friendly software solution:

- Data Collection
- Data Logging
- Data Extraction & Analysis
- Report Design
- Report Generation
- Report Distribution

Dream Report is a fully integrated reporting software solution.

### SECURED ENVIRONMENT

It also integrates an User Management module to protect project development but also to define report's access rights.

### OBJECT LIBRARY FOR INDUSTRIAL AUTOMATION

Being designed for industrial Automation, Dream Report offers unique statistical objects to extract specific processes metrics and data analysis.

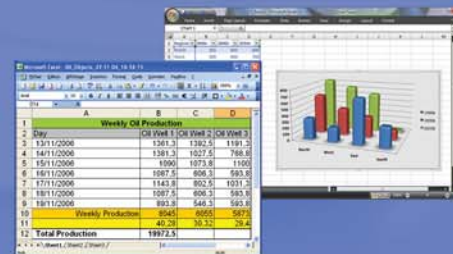


### TIME AND BATCH BASED REPORTS

Dream Report supports both batch and time based type of reports. It also enables to combine in reports objects with different period settings. It will be for example possible to compare 2 different batches in a chart .

### GENERATES SECURED PDF AND EXPORT TO EXCEL

By default Dream Report generates secured PDF reports to respond to regulatory. It also integrates a simple export mechanism to MS Excel that doesn't require any code, script or macro.



### RESPOND TO E.I.I REQUIREMENTS

Dream Report enables archiving of clean and accurate data in the customers specified database for further Enterprise Information Integration.

### MULTILINGUAL PRODUCT

Dream Report enables to change language online and allows to add new languages or change product terminology.

## DREAM REPORT LICENSING

Base Dream Report models include all drivers, no report limitation and can generate and distribute reports to all outputs excepted the web Portal.

**BASE LICENSES BY TAGS** (DR 50 - 250 - 500 - 1000 - 2000 - 5000 - 10 000...)

To respond to scalable projects and investment, ODS suggest multiple models based on numbers of tags. Is called a tag any data extracted from any data sources and used either for archiving or reporting purpose.

### WEB PORTAL IS BASED ON CONCURRENT USERS

Web option is also scalable and starts with 2 - 5 - 10 - 25 - 50 -100 ... concurrent users.



# MARKETS



OIL & GAS



POWER ENERGY



AUTOMOTIVE



WATER & WASTEWATER



BUILDING MANAGEMENT



INDUSTRIAL PROCESSES



MANUFACTURING

© 2004 – 2006 Ocean Data Systems, all rights reserved  
 Dream Report, Dream Connect, Dynamic Report Generator are trademarks of Ocean Data Systems,  
 All other trademarks are property of their respective owners.

<http://www.dreamreport.com>

**OCEAN DATA SYSTEMS**  
 contact@oceandatasys.com  
 Tel: +33 (0)4 74 90 94 40  
 Fax: +33 (0)4 74 90 97 19

Ocean Data Systems serves companies in most vertical markets, distributes its products worldwide through dedicated partners and distributors.