

TEMPERATURE SENSORS

STI, STC, STE

APPLICATION

Temperature sensors are used on heating and cooling plants in room and industrial applications. They are connected together with a regulator and allow temperature sensing and regulation.

OPERATING MODE

Temperature is sensed by a resistive element that changes its resistance when temperature changes (for the values of sensor based on temperature see cable temperature sensors table of values part).

IMMERSION SENSOR STI

Liquid duct mounted sensor used for temperature liquid sensing inside it.

OUTDOOR SENSOR STE

Wall mounted sensor used for temperature sensing on industrial places or outside.

AIR DUCT SENSOR STC

Air duct mounted sensor used for temperature air sensing inside it.

	XX	XX
TYPE OF USE:		
duct version	STC	
outdoor version	STE	
immersion version	STI	
TYPE OF SENSOR:		
NTC10K		11
NTC100K		12
NTC1K8		13
NTC10K3A1		14
NTC10K4A1		15
PT100		21
PT1000		22
Ni1000		31

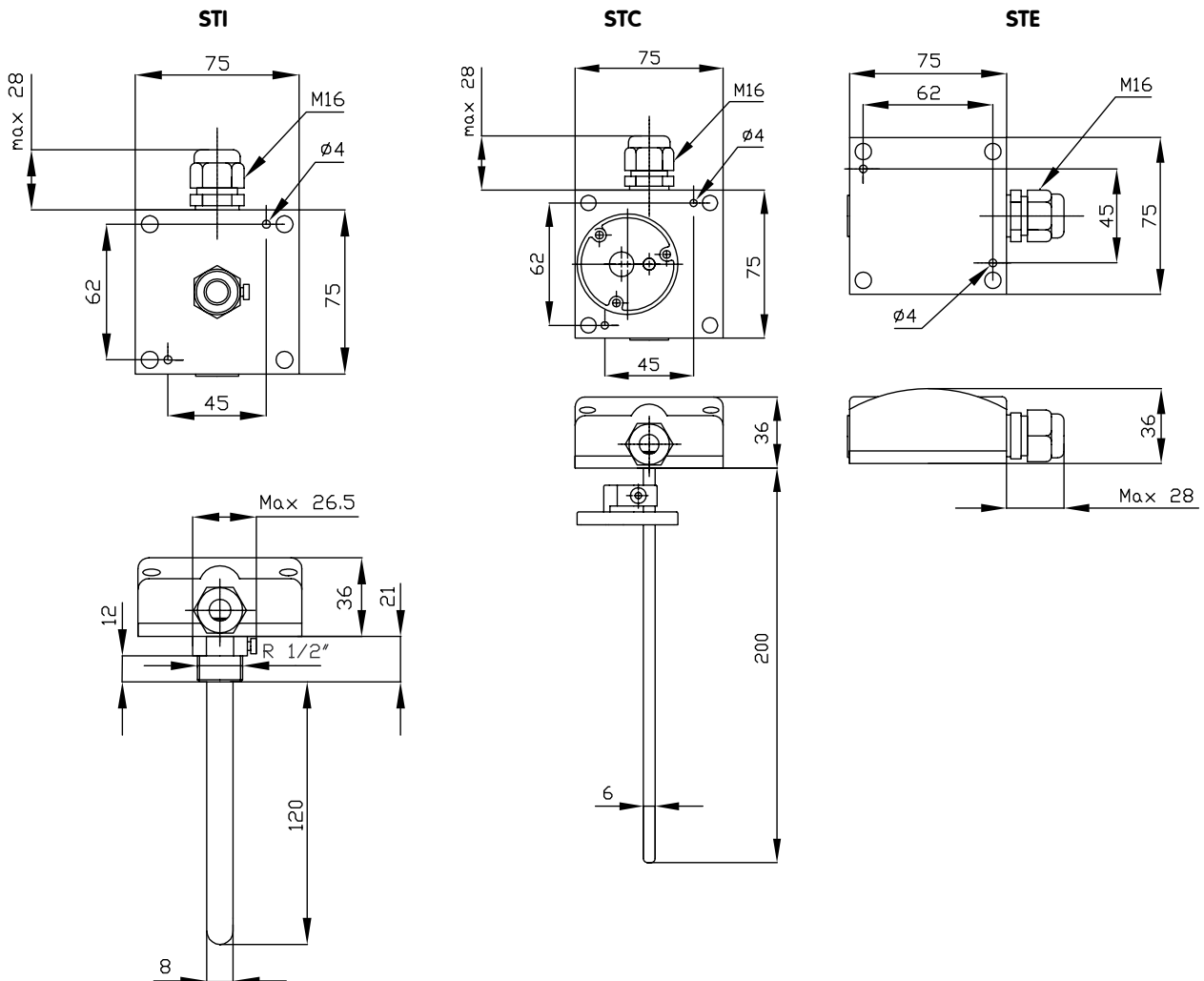
TYPE	MEASURING RANGE °C	COVER	BASE	POCKET	NOMINAL PRESSURE	PROTECTION
STI	-20...+120 (²)	polycarbonate	polycarbonate	copper nickered (¹)	PN15	IP65
STC	-20...+80	polycarbonate	polycarbonate	stainless steel Aisi316	PN15	IP65
STE	-20...+70	polycarbonate	polycarbonate	-	-	IP65

(¹) nipple in brass

(²) 110 °C with NTC 10K



DIMENSIONS (mm)



MOUNTING BRACKET DBZ-22 SUPPLIED WITH STC

