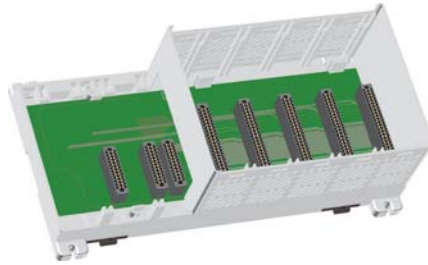


Productivity3000 Overview

Bases

Four bases are available, with 3, 5, 8, and 11 slots.



Productivity3000 Bases		
Part Number	Description	Price
P3-03B	3-slot base	<--->
P3-05B	5-slot base	<--->
P3-08B	8-slot base	<--->
P3-11B	11-slot base	<--->

Power Supplies

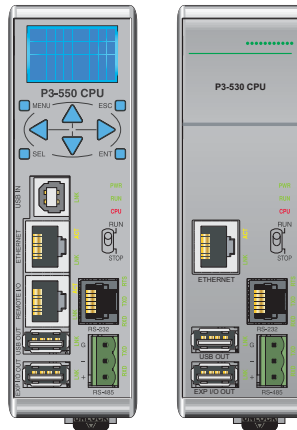
Two power supplies are available; one accepts AC input and one accepts DC input.



Productivity3000 Power Supplies		
Part Number	Description	Price
P3-01AC	Power supply (powered from AC source)	<--->
P3-01DC	Power supply (powered from DC source)	<--->

CPU Module

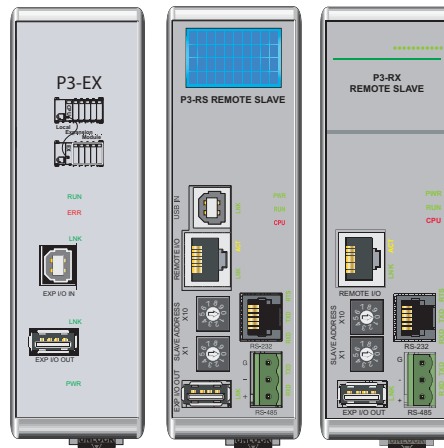
Two CPU modules are currently available.



Productivity3000 CPU Module		
Part Number	Description	Price
P3-550	CPU module	<--->
P3-530	CPU module	<--->

Expansion and Remote Slave Modules

One local expansion module and two remote slave modules are available.



Productivity3000 Expansion, Remote Slave Modules		
Part Number	Description	Price
P3-EX	Expansion module	<--->
P3-RS	Remote slave module	<--->
P3-RX	Remote slave module	<--->

Productivity3000 Overview

Discrete I/O Modules

Seven discrete input and fourteen discrete output modules are available.



Discrete Input Modules		
Part Number	Description	Price
P3-16SIM	Input Simulator	<--->
P3-08ND3S	Isolated Sinking/Sourcing Input	<--->
P3-16ND3	Sinking/Sourcing DC Input	<--->
P3-32ND3	Sinking/Sourcing Input	<--->
P3-64ND3	Sinking/Sourcing Input	<--->
P3-08NAS	Isolated AC Input	<--->
P3-16NA	AC Input	<--->

Discrete Output Modules		
Part Number	Description	Price
P3-08TD1S	Isolated Sinking Output	<--->
P3-08TD2S	Isolated Sourcing Output	<--->
P3-16TD1	Sinking Output	<--->
P3-16TD2	Sourcing Output	<--->
P3-32TD1	Sinking Output	<--->
P3-32TD2	Sourcing Output	<--->
P3-64TD1	Sinking Output	<--->
P3-64TD2	Sourcing Output	<--->
P3-08TAS	Isolated AC Out	<--->
P3-16TA	AC Output	<--->
P3-08TRS	Isolated Relay Output	<--->
P3-08TRS-1	Isolated Relay Output	<--->
P3-16TR	Relay Output	<--->
P3-16TD3P	Sinking/Sourcing Protected Output	<--->

Analog I/O Modules

Six analog input, seven analog output, and two analog input/output modules are available.



Analog Input Modules		
Part Number	Description	Price
P3-04ADS	Isolated Analog Input	<--->
P3-08AD	Analog Input	<--->
P3-16AD-1	Analog Current Input	<--->
P3-16AD-2	Analog Voltage Input	<--->
P3-08RTD	Analog RTD Input	<--->
P3-08THM	Analog Thermocouple	<--->

Analog Output Modules		
Part Number	Description	Price
P3-04DA	Analog Output	<--->
P3-08DA-1	Analog Current Output	<--->
P3-08DA-2	Analog Voltage Output	<--->
P3-06DAS-1	Isolated Analog Current Output	<--->
P3-06DAS-2	Isolated Analog Voltage Output	<--->
P3-16DA-1	Analog Current Output	<--->
P3-16DA-2	Analog Voltage Output	<--->

Analog Input/Output Modules		
Part Number	Description	Price
P3-8AD4DA-1	Analog Input/Output	<--->
P3-8AD4DA-2	Analog Input/Output	<--->

Specialty Modules

The two specialty modules available are the high-speed input and high-speed output modules.



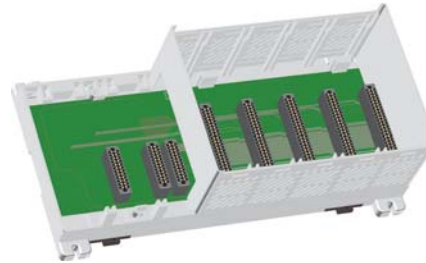
Specialty Modules		
Part Number	Description	Price
P3-HSI	High-Speed Input	<--->
P3-HSO	High-Speed Output	<--->

Productivity3000 Overview

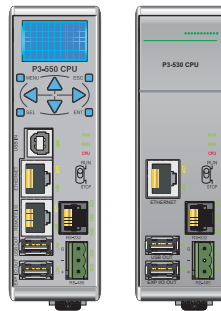
What you'll need:

Of course, what you'll need for your system depends on your particular application, but this overview shows you what you'll need for a simple system.

1. Select your base.



2. Select a 24 VDC or 120 VAC power supply.



3. Order a CPU module.



4. Order and install the Productivity Suite programming software in your PC.



5. Select and order your I/O modules.

At the same time, select and order your ZIPLink wiring system or removable terminal blocks.



6. Select your PC-to-PAC programming cable.

You will need a standard USB or Ethernet cable for programming, depending on the CPU selected and communications port (USB or Ethernet) chosen.



7. Select tools, wire, and provide power.

Screwdriver
DN-SS1



Wire Strippers
DN-WS



Hookup Wire



Programming Software

P3-PGMSW FREE
 (\$495 value)

Productivity Suite is user-friendly programming software designed to allow quick and easy programming of ladder logic programs for the Productivity3000 PAC.

The online help file provides information that will help you get acquainted with the software quickly.



PC Requirements

Productivity Suite programming software works with Windows® 2000 Service Pack 4, XP (Home or Professional), Vista (Home, Basic, Premium, 32 or 64-bit) or Windows 7 (Home, Professional, Ultimate, 32 or 64-bit). These are the minimum system requirements:

- Windows 2000 or XP Personal Computer with a 333 MHz or higher processor (CPU) clock speed recommended; Intel Pentium/Celeron family or AMD K6/Athlon/Duron family, or compatible processor recommended
- Vista or Windows 7 Personal Computer with a 800 MHz or higher processor (CPU) clock speed recommended; Intel Pentium/Celeron family or AMD K6/Athlon/Duron family, or compatible processor recommended
- SVGA 800x600 pixels resolution (1024x768 pixels resolution recommended)
- 300MB free hard-disk space
- Windows2000 or XP: 128MB free RAM (512MB recommended)
- Vista or Windows 7; 512MB free RAM (1GB recommended).
- CD-ROM or DVD drive for installing software from the CD
- USB or Ethernet port for project transfer to PAC



Main window

The Main Window is displayed when the program opens. It is divided into Menus, Toolbars, and Windows that work together to make project development as simple as possible.

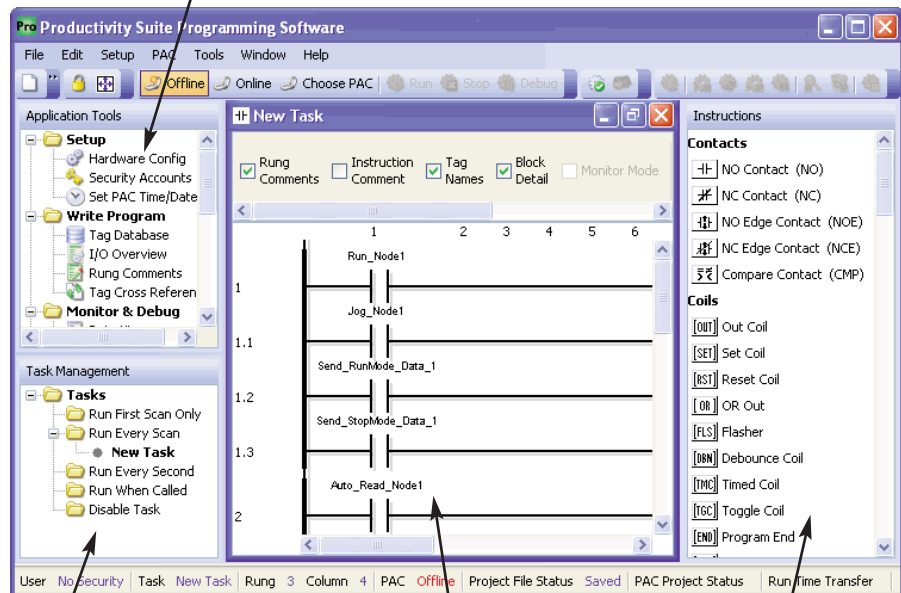
Programming Cable

You will need a standard USB or Ethernet cable for programming, depending on the type of CPU and whether you use the USB (P3-550) or Ethernet (P3-530 and P3-550) programming port.

If possible, we recommend using a USB programming cable; just plug it in and it works. We sell these A-to-B USB cables:

- USB-CBL-AB3 (3 ft.)
- USB-CBL-AB6 (6 ft.)
- USB-CBL-AB10 (10 ft.)
- USB-CBL-AB15 (15 ft.)

Application Tool Panel



Task Management Panel

Ladder Editor Window

Instruction Panel Window