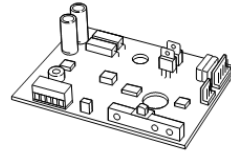


Spares

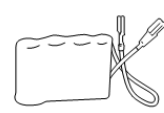
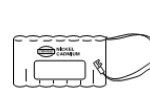
Actuators

PCB Board

Model	Description	Part number	Data sheet
ALE	Circuit board	477-9-241	3.401
ALES	"	477-9-241	3.501



Controllers



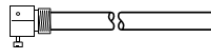
Clocks

Model	Description	Part number	Data sheet
CSC	Analogue T/S	561-9-260	2.021
SVT	"	561-9-260	2.001
CSC	Digital T/S	561-9-261	2.021
SVT	"	561-9-261	2.001

Batteries

Model	Description	Part number	Data sheet
CMC 1	-	561-9-220	-
CMC 3---	-	563-9-231	-
CSMC 3---	-	563-9-231	-
MMC 2---	-	563-9-231	-
MMC 3---	-	563-9-231	-
SMT	-	563-9-231	-
SVT	-	588-9-210	2.001

Sensors



Pockets

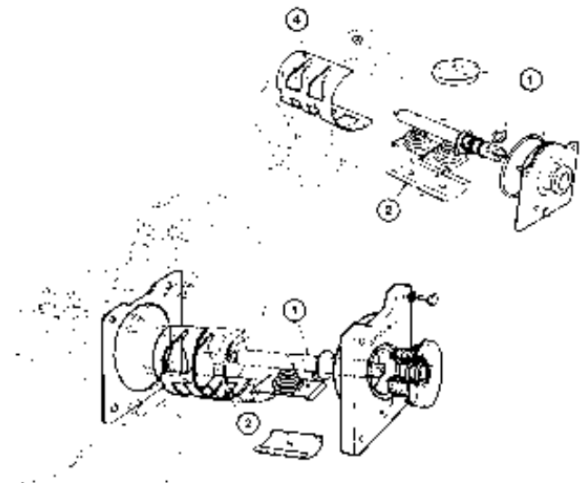
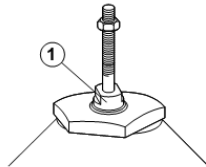
Model	Description	Part number	Data sheet
(T) Range	125mm immersion	851-2-401	-

Valves



Lug Nuts

Description	Part number	Data sheet
1/2"...2" valves	626-9-313	-
2 1/2"...6" valves	626-9-312	-

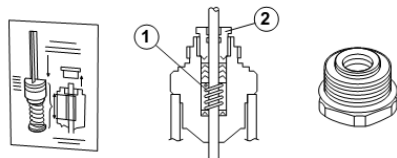


Replacement Gland Nut and Tube of Grease Kits

Model	Description	Part number	Data sheet	General notes
MEU	-	623-9-201	4.101	
MJF	-	626-9-203	4.610	
MZ	1/2"...2" valves	626-9-203	"	- series 3 valves
FEU	-	623-9-201	4.101	
VEU	-	623-9-201	"	
VJF	-	626-9-203	4.610	
VSF	15...25mm	626-9-203	4.110	
VZ	1/2"...2" valves	626-9-203	4.110	- series 1 & 2 valves
MZX	1/2"...2" valves	626-9-204	4.601	
VZX	1/2"...2" valves	626-9-204	4.101	

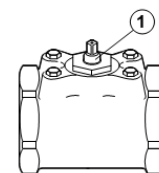
Reconditioning Kits

Model	Description	Part number	Data sheet
MB	1/2"...1" valves	617-9-410	4.501
	1 1/4" valves	617-9-411	"
	1 1/2" valves	617-9-412	"
	2" valves	617-9-413	"
MBF	65mm valves	618-9-510	4.501
	80mm valves	618-9-511	"
	100mm valves	618-9-512	"



Replacement Gland Assembly, Gland Nut and Tube of Grease Kits

Model	Description	Part number	Data sheet	General notes
MZ	1/2"...2" valves	626-9-310	4.610	- series 1 valves
MZF	65...150mm	626-9-311	"	
VSF	32...50mm	667-9-201	"	
VZ	1"...2" valves	626-9-310	4.110	- series 1 valves
VZF	65...150mm	626-9-311	"	- series 1 valves



Reconditioning Kit

Model	Description	Part number	Data sheet
VV	2"...4" valves	618-9-210	-