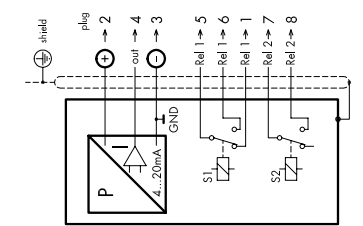


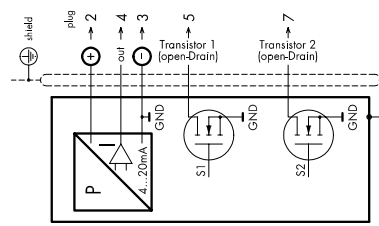
Инструкция по наладке Instructions de service Instructions

8864 Display Control Switch DCS

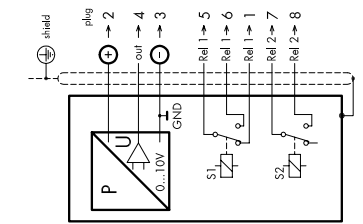
Электрические подключения / Raccordement électrique / Electrical connection



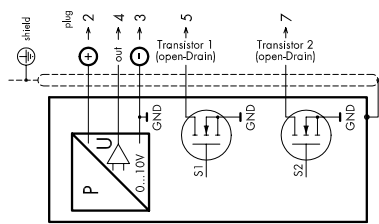
4...20mA / 2 relays
8864.XX.XXXX.XX.19.23



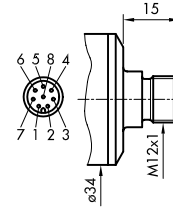
4...20mA / 2 NPN transistors
8864.XX.XXXX.XX.19.27



0...10VDC / 2 relays
8864.XX.XXXX.XX.17.23



0...10VDC / 2 NPN transistors
8864.XX.XXXX.XX.17.27



Length: 15
Diameter: 14.5
Thread: M12x1
Länge/ Longueur/ Length: 2m
Material/ Matériaux/ Material: PUR

- 1 = белый/blanc/white 5 = серый/gris/grey
2 = коричнев/brun/brown 6 = розов/rose/pink
3 = зеленый/vert/green 7 = голуб/blue/blue
4 = желт/jaune/yellow 8 = красн/rouge/red

Экран/écran/shield:
подвинт/dans écrou/on screw

DCS CON

Выход	Сопротивление нагр.	U _{питания}
4...20mA	£250W	10...30V DC
0...10V DC	£5.0 kW	15...30V DC

Выходы

- 2 Реле: электр. изолированные, 30W (max.1A) 48 V AC/DC; время перекл.: 5...9999ms, настраиваемое, или
- 2 Транзистора: NPN, max 0.5 A, устойчивые к коротк.замык, время перекл.: 5...9999ms, настраиваемое
- Гистерезис: тип. 1...99% d.S.
- Аналоговые: 4...20mA (opt. 0...10 V DC)
- Дисплей: дисплей LCD, 4 знака
Разрешение: £0.2% FS
Индикация: -5...125% FS

Sortie

- 2 Relais: isolés galvaniquement, 30W (max.1A) 48 V AC/DC; temps de réponse: 5...9999ms, ajustable, ou
- 2 Transistors NPN: max 0.5 A, protégé contre le court-circuit; temps de réponse: 5...9999ms, ajustable
- Hystérésis: typ. 1...99% E.M.
- Analogique: 4...20mA (opt. 0...10 V DC)
- Indication: Affichage LCD rétroéclairé, 4 Digits résolution: £0.2% E.M. indication -5...125% E.M.

Output

- 2 Relay: electrically isolated, 30W (max.1A) 48 V AC/DC; switching time: 5...9999ms, adjustable, or
- 2 Transistors: NPN, max 0.5 A, short circuit proof; switching: 5...9999ms, adjustable
- Switching diff.: typ. 1...99% FS
- Analogue: 4...20mA (opt. 0...10 V DC)
- Display: back-lit LCD-display, 4 Digits resolution: £0.2% FS display -5...125% FS

Максимальный момент соединения / Couple de serrage raccord de pression / Torque moment pressure connection

max. 25Nm

Температура рабочая и хранения / Température de service & stockage / Operating- & Storage temperature

-25°C ... +80°C

(Дисплей/ Température de service/ Operating temperature: LCD Display -10...70°C)

Температура среды / Température du fluide / Media temperature

-25°C ... +125°C

Степень защиты / Protection / Protection

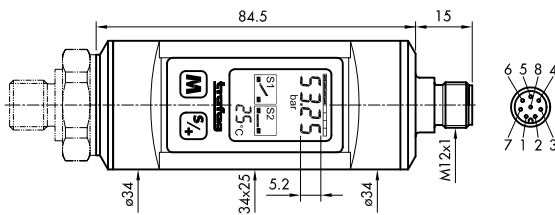
IP65¹⁾

¹⁾ nur mit vorschriftsmässig montierter Kabeldose gültig/ valable seulement avec fiche femelle montée selon instructions/ provided with female connector is mounted according to instructions

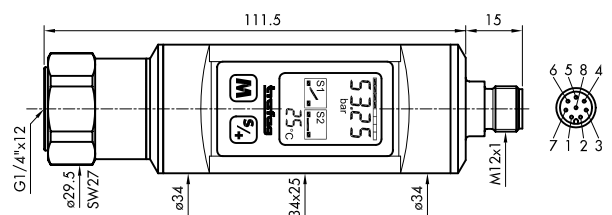
Рабочее давление / Pression de fonctionnement / Operating pressure

Диапазон	0 ... 1.0	Перегрузка	max.	2
Plage	0 ... 2.5	Surpression		5
Range	0 ... 4.0	Over pressure		8
	0 ... 6.0			12
bar	0 ... 10.0	bar		20
	0 ... 16.0			32
	0 ... 25.0			50
	0 ... 40.0			80
	0 ... 60.0			120
	0 ... 100.0			200
	0 ... 160.0			500
	0 ... 250.0			500
	0 ... 400.0			800
	0 ... 600.0			1200
	0 ... 1000.0			1800
	0 ... 1600.0			3000
	0 ... 2000.0			3000

Размеры / Cotes d'encombrement / Dimensions

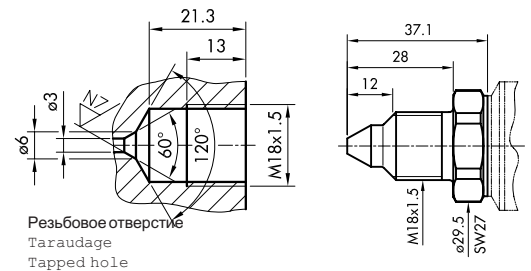
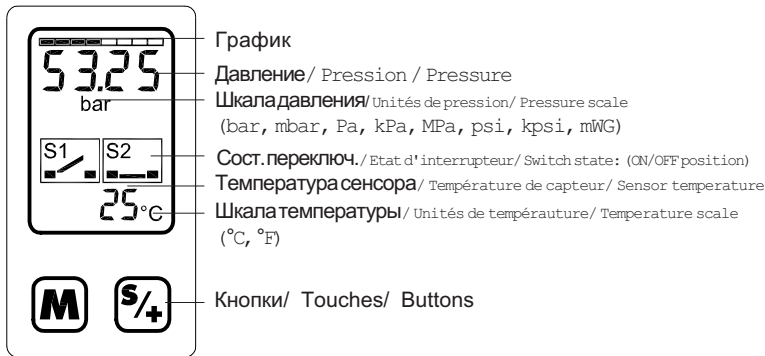


8864.XX.23XX.XX.XX.XX



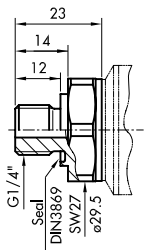
8864.XX.2610.XX.XX.XX
8864.XX.2310.XX.XX.XX

(1:1)

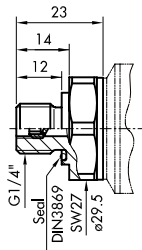


Резьбовое отверстие
Taraudage
Tapped hole

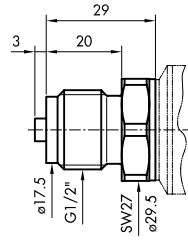
8864.XX.2329.XX.XX.XX



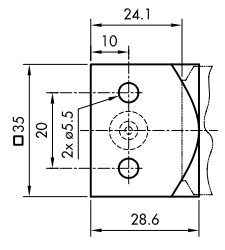
8864.XX.2317.XX.XX.XX



8864.XX.2315.XX.XX.XX



8864.XX.2311.XX.XX.XX

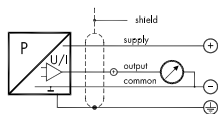


8864.XX.2341.XX.XX.XX

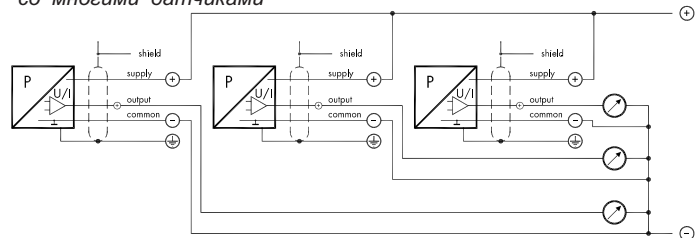
Соединение / Connectique de / Connection of

с одним датчиком

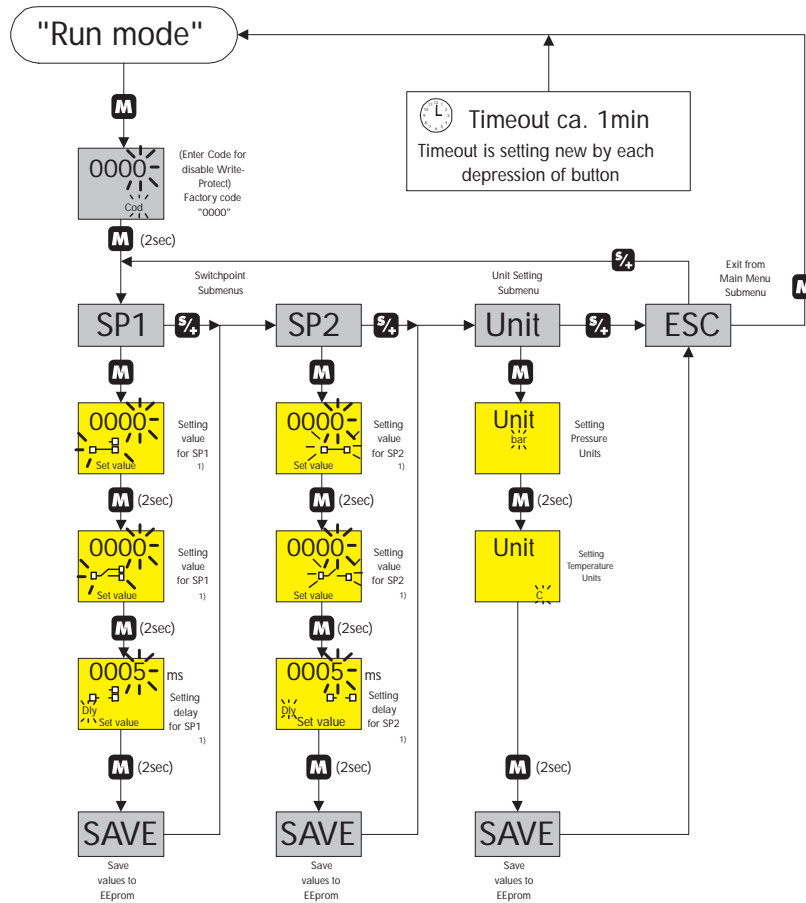
I/U-OUT 3-wires



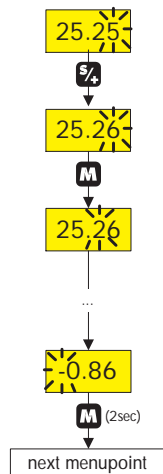
со многими датчиками



Меню



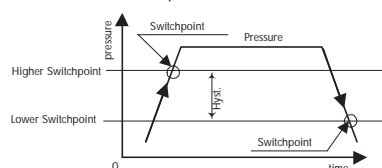
1) Setting of numerical values



Error list

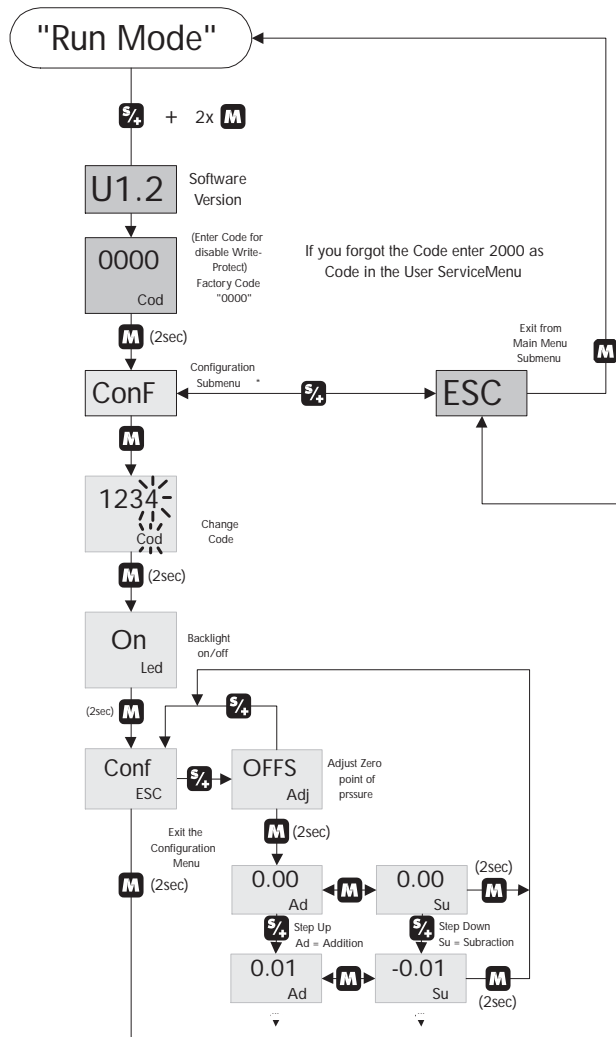
Menu	Run mode
Value out of range	Pressure out of Range
Hysteresis under 1% of Range	Temperature out of Operating Temperature

Switchpoint definition

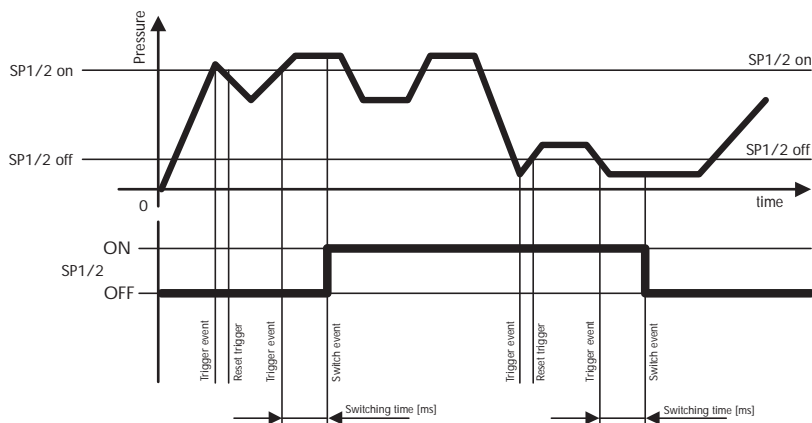


Legend

- Press this button for set values or scrolling menu
- Press this button for step to next digit or select submenu
- Press this button for 2sec to step to next menu point



Switching time (Delay) (free programmable from 5ms ... 9999ms)



Legend

- S/4** Press this button for set values or scrolling menu
- M** Press this button for step to next digit or select submenu
- M** (2sec) Press this button for 2sec to step to next menupoint